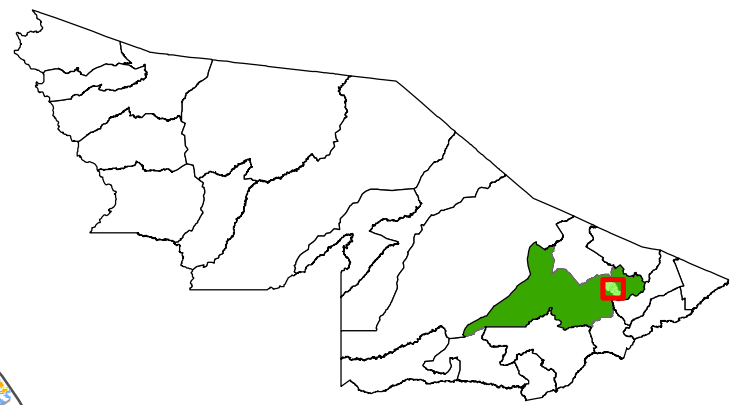


67°55'W  
9°54'S



**LAB GAMA**  
Laboratório de Geoprocessamento Aplicado ao Meio Ambiente

Produzido por: Sonaira Silva

## Legenda

— Arruamento

□ Perímetro urbano

Reincidência das queimadas (2014a2018)

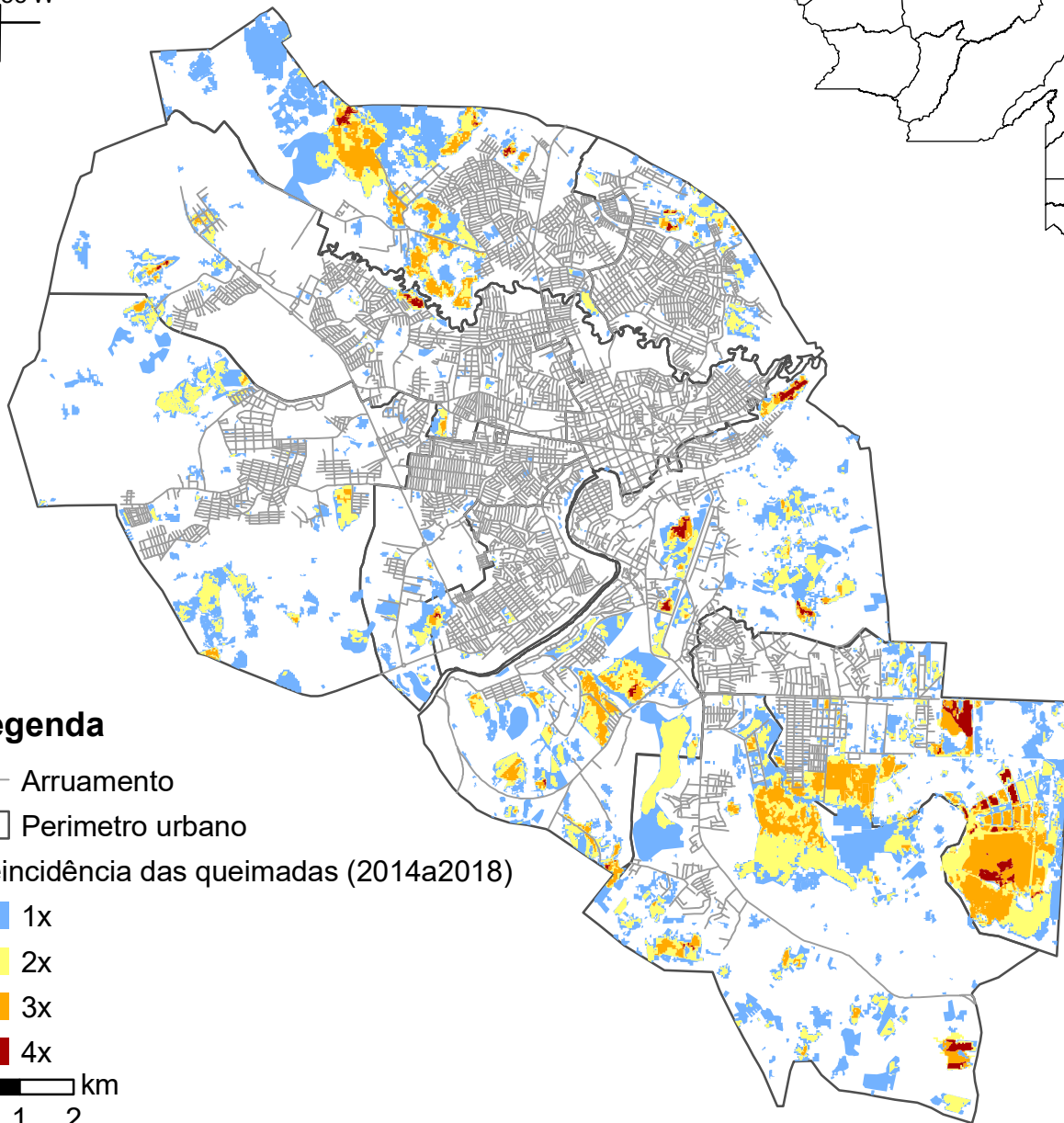
1x

2x

3x

4x

0 1 2 km



10°05'S  
67°44'W